

Appendix C: Facilities Services Stop the Bleed Kit Placement Guidelines

The Stop the Bleed kit must be in an unlocked cabinet accessible to all employees. Starting in July 2025, all Stop the Bleed cabinets on campus should be alarmed so that the alarm goes off when the cabinet is opened and stops when the cabinet is closed. The Stop the Bleed cabinets will have to utilize the 9-volt standard for the alarm system.

Stop the Bleed alarm systems are not required for devices within the Chancellor's home, and portable units. Portable units include but are not limited to the ones used by the UCR University of California Police Department (UCPD), athletics, and remote research sites.

The Stop the Bleed Kit(s) should be installed at a central point relative to the building's population. Ideally, the unit is installed in a high-traffic area.

(1) One Stop the Bleed unit shall be placed in an easily accessible and recognizable container next to an automated external defibrillator (AED). There should be 6 trauma kits in the container. This ensures that the Stop the Bleed kit is easily accessible to anyone entering or exiting the building and is positioned in a central and commonly known location, making it more likely to be found and used quickly in an emergency.

The wall cabinet housing a Stop the Bleed kit must not protrude more than 4 inches from the wall into walkways, corridors, passageways, or aisles.

The Stop the Bleed unit must be clearly visible and unobstructed, and it must include use and reporting instructions.

To ensure compliance with applicable laws and regulations, including the Americans with Disabilities Act (ADA), the UCR campus must abide by the following requirements regarding installing and placing the Stop the Bleed unit.

C.1 Stop the Bleed Cabinet Installation

Per 2010 Americans with Disabilities Act (ADA) standards for Accessible Design, Section 308 unless otherwise noted (see section 2010 ADA standards for detailed description). These national standards are subject to change by authorities having jurisdiction. ADA requirements are constantly evolving through ongoing legislative and judicial actions.

C.2 Stop the Bleed Cabinet Height

Forward Reach

The requirements specify that the cabinet handle, and consequently the Stop the Bleed handle, shall have a maximum height of 48 inches above the finished floor (AFF), with a minimum height of 15 inches AFF. When reaching forward over an obstruction, the clear floor

space shall extend beneath the element for a distance equal to or greater than the required reach depth over the obstruction. For a high forward reach where the reach depth is 20 inches maximum, the maximum height shall be 48 inches. However, if the reach depth exceeds 20 inches, the high forward reach shall not exceed 44 inches, and the reach depth shall be limited to 25 inches.

Parallel or Side Reach

Where the side reach is unobstructed, both the cabinet handle AND the Stop the Bleed handle shall not exceed 48 inches in height above the finished floor or ground, with a minimum height of 15 inches. An obstruction is permissible between the clear floor or ground space and the element if the depth of the obstruction does not exceed 10 inches.

C.3 Stop the Bleed Cabinet Protrusion

Per [2010 ADA Standards for Accessible Design](#), any wall-mounted cabinet that protrudes more than 4 inches shall have the bottom corner no higher than 27 inches from the floor in a walkway.

In a circulation path (walks, hallways, ramps, stairways, landings, courtyards)

- If the mounting location is in a circulation path and the leading edge is between 27’ and 80’ AFF (48” in the above section), it shall protrude no more than 4” maximum horizontally into the circulation path (sections 204 and 307.2)
- If mounting 27 to 48 inches, the cabinet must be recessed or semi-recessed into the wall so it will not protrude more than 4 inches.
- If the cabinet has the leading edge below 27 inches, it may protrude any amount as long as it does not violate any exit corridor requirements in a room
- If the mounting location is not in a circulation path, it may project any amount from the wall.

C.4 2010 ADA Standards

Advisory 308.1 General. The following table provides guidance on reach ranges for children according to age, where building elements such as coat hooks, lockers, or operable parts are designed for use primarily by children. These dimensions apply to either forward or side reaches. Accessible elements and operable parts designed for adult use or children over age 12 can be located outside these ranges but must be within the adult reach ranges required by 308.

Children's Reach Ranges			
Forward or Side Reach	Ages 3 and 4	Ages 5 through 8	Ages 9 through 12
High (maximum)	36 in (915 mm)	40 in (1015 mm)	44 in (1120 mm)

Children's Reach Ranges

Forward or Side Reach	Ages 3 and 4	Ages 5 through 8	Ages 9 through 12
Low (minimum)	20 in (510 mm)	18 in (455 mm)	16 in (405 mm)

308.2 Forward Reach

308.2.1 Unobstructed. Where a forward reach is unobstructed, the high forward reach shall be 48 inches (1220 mm) maximum, and the low forward reach shall be 15 inches (380 mm) minimum above the floor or ground.

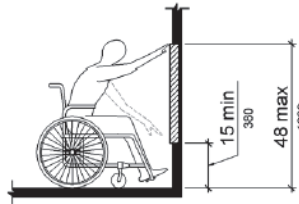


Figure 308.2.1 Unobstructed Forward Reach

308.2.2 Obstructed High Reach. Where a high front forward reaches is over an obstruction, the clear floor space shall extend beneath the element for a distance not less than the required reach depth for the obstructions. The high forward reach shall be 49 inches (1220 mm) maximum, where the reach depth is 20 inches (510 mm) maximum. Where the reach depth exceeds 20 inches (510 mm), the high forward reach shall be 44 inches (1120 mm) maximum, and the reach depth shall be 25 inches (635 mm) maximum.

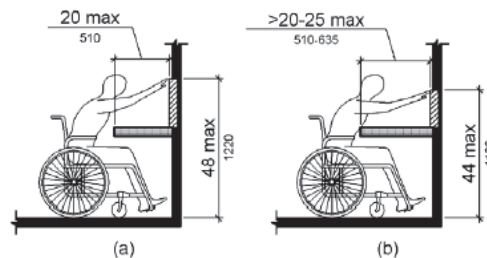


Figure 308.2.2 Obstructed High Forward Reach

308.3 Side Reach

308.3.1 Unobstructed. Where a clear floor or ground space allows a parallel approach to an element and the side reach is unobstructed, the high side reach shall be 48 inches (1220 mm) maximum and the low side reach shall be 15 inches (380 mm) minimum above the finish floor or ground.

Exceptions:

1. An obstruction shall be permitted between the clear floor or ground space and the element where the depth of the obstruction is 10 inches (255 mm) maximum.
2. Operable parts of fuel dispensers shall be permitted to be 54 inches (1370 mm) maximum measured from the surface of the vehicular way where fuel dispensers are installed on existing curbs.

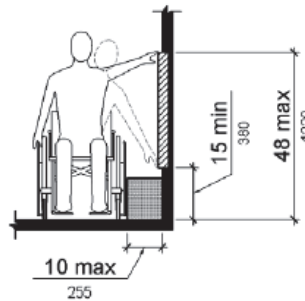


Figure 308.3.1 Unobstructed Side Reach

C.5 Stop the Bleed Cubix Cabinet Dimensions and Specifications

The Cubix CB2-BC-S and KC-S are two types of Stop the Bleed cabinets utilized on campus. The semi-recessed Stop the Bleed cabinet is also an approved AED wall storage cabinet appropriate for the campus. The Stop the Bleed Cabinets must be installed following Americans with Disabilities Act (ADA) standards.

The height to reach the handle of a Stop the Bleed kit in a public gathering place should be no more than 48 inches high. ADA guidelines specify maximum reach ranges for health equipment such as Stop the Bleed kits and other life safety devices. For safety equipment with an unobstructed approach, the maximum forward reach to the equipment is 48 inches above the floor. The maximum side reach for an unobstructed approach to a Stop the Bleed kit is 54 inches.

Standard Bleeding Control Wall Storage Cabinet:

Part Number: CB2-BC-S

Price (each): \$126.65.

Dimensions: 14 3/4"L x 11 5/8"H x 6 3/4"W

Houses up to 6 Bleeding Control Kits.



	Interior Dimensions				Exterior Dimensions			
Standard Cabinets	Height	Length	Depth		Height	Length	Depth	Weight
Small	11 3/8"	14 1/2"	6 1/2"		11 5/8"	14 3/4"	6 3/4"	7.5 lbs.
	Packaging Dimensions (1 unit)				Palletized Dimensions (60 units)			
Standard Cabinets	Height	Length	Depth	Weight	Height	Length	Depth	Weight
Small	14"	18"	10"	10 lbs.	88"	40"	48"	620 lbs.

Components included:

Standard, Surface Mounted Bleeding

Control Wall Storage Cabinet

- 0.8mm cold rolled steel
- Textured powder coating finish
- Recessed hinges
- Magnetic door

Transparent Acrylic Window

- Measures 7 1/4" H x 7" L

Keyed Alarm System

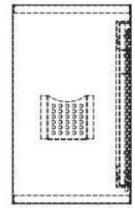
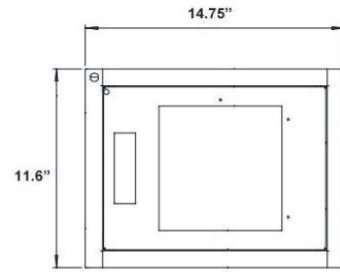
- Set of two keys
- 80-120 dB local alarm
- 9V battery

Mounting Hardware

- Wall Anchors (4)
- Washers (4)

- Screws (4)

This cabinet is designed to hold bleeding control kits, accessories, and other hemorrhage control products.



CB2-S



In case you need an additional storage cabinet, you may purchase a **Small Bleeding Control Wall Storage Cabinet:**

Part Number: KC-S

Price (each): \$75.65

Dimensions: 14 3/4"L x 5 7/8"H x 6 3/4"W. It can House up to 4 Bleeding Control Kits.



	Interior Dimensions				Exterior Dimensions			
Kit Cabinets	Height	Length	Depth		Height	Length	Depth	Weight
Small	5 5/8"	14 1/2"	6 1/2"		7 3/8"	14 3/4"	6 3/4"	6 lbs.
	Packaging Dimensions (1 unit)				Palletized Dimensions			
Kit Cabinets	Height	Length	Depth	Weight				
Small	9"	17"	8"	7.5 lbs.				

Components included:

Small Kit Storage Cabinet

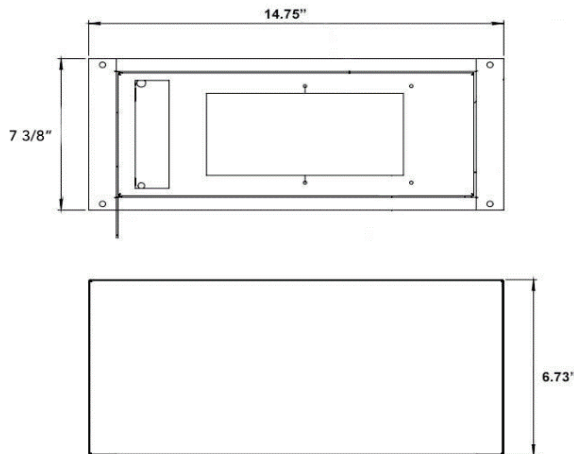
- 0.8mm cold rolled steel
- Textured powder coating finish
- Recessed hinges
- Magnetic door
- Viewing window measuring 6 5/8" L x 3 5/8" H

Sticker Pack

- Naloxone
- Bleeding Control
- Allergy
- First Aid
- Oxygen

Keyed alarm system

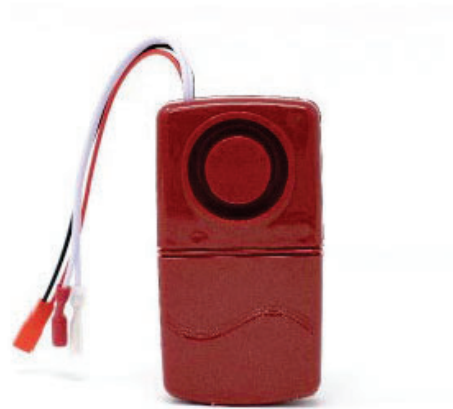
- Set of two keys
- 80-120 dB local alarm
- 9V battery



KC-S

Mounting Hardware

- Wall Anchors (4)
- Washers (4)
- Screws (4)



Semi-Recessed AED or Bleeding Control Wall Storage Cabinet

Part Number: SR-S

When placing the order for Part Number: SR-S, it is essential to specify whether it is for an AED or for Bleeding Control.

Price (each): \$160.65.

Dimensions: 14 3/4"L x 11 5/8"H x 6 3/4"W

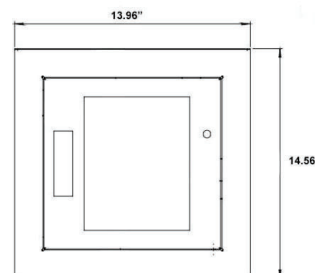
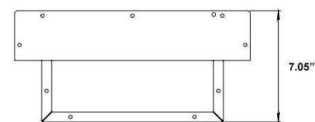
Houses up to 6 Bleeding Control Kits.



	Interior/Rough Wall Dimensions				Exterior Dimensions			
Recessed Cabinets	Height	Length	Depth		Height	Length	Depth	Weight
Large	12"	12"	6 3/4" / 4"		14 1/2"	14"	3 1/8"	9 lbs.
	Packaging Dimensions (1 unit)				Palletized Dimensions (40 units)			
Recessed Cabinets	Height	Length	Depth	Weight	Height	Length	Depth	Weight
Large	17"	17"	10"	11 lbs.	88"	48"	40"	750 lbs.

Components included:

- Semi-Recessed AED or Bleeding Control Wall Storage Cabinet
 - 0.8mm cold rolled steel
 - Textured powder coating finish
 - Recessed hinges
 - Magnetic door
- Keyed alarm system
 - Set of two keys
 - 80-120 dB local alarm
 - 9V battery
- Mounting Hardware
 - Screws (4)
 - Wall Anchors (4)
 - Washers (4)



SR-S



This cabinet is designed to hold Philips, Heartsine, and Defibtech AEDs or Stop the Bleed Kits

C.6 Signage

Stop the Bleed units shall have signage on the building exterior and at the main entry door indicating their location, next to an installed AED unit. The “Stop the Bleed” sign shall include the symbol for the Stop the Bleed kits with text stating “Bleeding Control” and a decal on the Stop the Bleed unit box stating, “Bleeding Control on Site.”

Highly visible, three-dimensional transforming “Bleeding Control” sign that allows individuals to locate the bleeding control station that can be used in three different configurations (Flat, Corner, and triangular) directions Each panel: 7" x 4 1/2"

Part Number: Flex3DWS-BC

Price (each): \$20



Bleeding Control On-Site Decal

The Bleeding Control On-Site Decal serves as a vital visual aid in emergency response settings, providing clear guidance and awareness of the presence of bleeding control supplies on-site. Crafted with durable materials and featuring bold, easy-to-read lettering and symbols, this decal ensures prominent visibility in various environments, including schools, workplaces, and public venues.

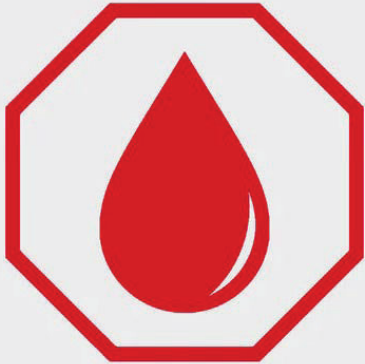
By prominently displaying the location of bleeding control resources, the decal enhances preparedness and empowers individuals to respond effectively to critical situations. Its weather-resistant design and adhesive backing enable secure placement on walls, doors, or other surfaces, serving as an essential component of comprehensive bleeding control readiness strategies.

Part Number: BC- Decal / Cubix safety Bleeding Control Decal.

Price (each): \$10

Weight: 0.25 lbs. Measures: 4" L x 5" H

**BLEEDING
CONTROL**



ON SITE